



KATHARINE T. CARTER & ASSOCIATES

JOHN KINGERLEE : SOLO EXHIBITION

Wednesday, December 15, 2021 to Tuesday, November 15, 2022

This survey of Kingerlee's work includes paintings the artist executed after moving to the remote Beara Peninsula in southwest Ireland in the early 1980s. Kingerlee paints in a number of modes that, despite their singularity, are strongly connected. Among the highlights of the exhibition is work from the Grid Series, in which each panel consists of a grid of opaque color squares, built up over time, to create surfaces evocative of the rugged Irish landscape. Kingerlee's works are deeply imbued by his lifestyle to live part-time in a remote locale, at one with the landscape and bearing the hardships of daily life in order to paint.

JOHN KINGERLEE

Head, 2015

152.4 x 101.6 cm (h x w)

Giclee print on Hahnemuhle etching paper. Edition of 10



JOHN KINGERLEE

For Hassan (Srik Series), 2017-18

16 x 11 inch (h x w)

Collage on Indian Paper



JOHN KINGERLEE

Those Early Days in Cornwall (Srik series), 2014-18

40.6 x 40.6 cm (h x w)

Collage on Indian paper



JOHN KINGERLEE

Man of Destiny, 2015

152.4 x 101.6 cm (h x w)

Giclee print on Hahnemuhle etching paper. Edition of 10

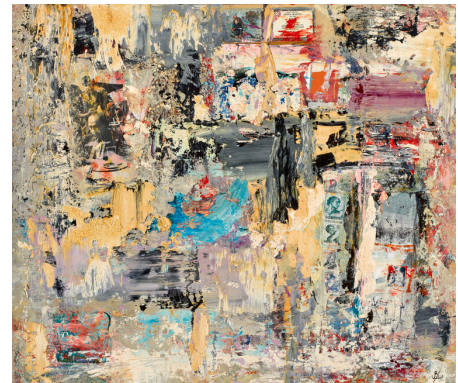


JOHN KINGERLEE

The Traveller (Srik series), 2016

40.6 x 45.7 cm (h x w)

Collage on Indian Paper



JOHN KINGERLEE

Neighbours (Srik series)

96 x 96 inch (h x w)

16 giclee prints each 24"x24" inches on Hahnemuhle etching paper. Edition of 3



JOHN KINGERLEE

Head, 2015

152.4 x 101.6 cm (h x w)

Giclee print on Hahnemuhle etching paper. Edition of 10



JOHN KINGERLEE

John Kingerlee by John Mendelsohn

51 x 76 inch (h x w)

JOHN KINGERLEE

John Kingerlee creates intimately, all the better to lose ourselves in his painted worlds without the burden of grandiosity of size or gesture. This is not to say that this work eschews drama, for it engages in its own potent theatrics of loss, memory, and the possibility of their reclamation in the experience of the present moment. But it does so at a scale that can be held in two hands, like reading an ancient scroll. We sense in this work the enduring, immemorial persistence of rocks and walls, and of the spirit, at once human and transcendent, that inhabits them. Kingerlee's paintings are literally in touch with their subjects, simultaneously tactile and visual. The intimacy of this work leaves no space between artist and subject, viewer and the experience of seeing.

John Mendelsohn

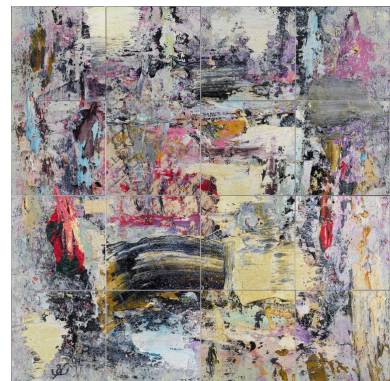
JOHN KINGERLEE

Cullens, 2016

96 x 96 inch (h x w)

16 giclee prints on Hahnemuhle etching paper. Edition of 3

Each print 24x24 inches



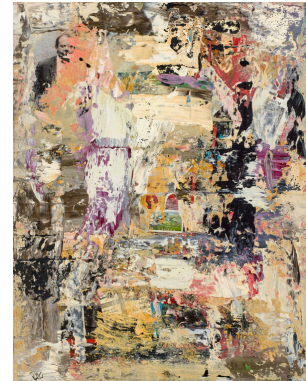
JOHN KINGERLEE
Vagrant (Srik series), 2015

38.1 x 50.8 cm (h x w)
Collage on Indian Paper



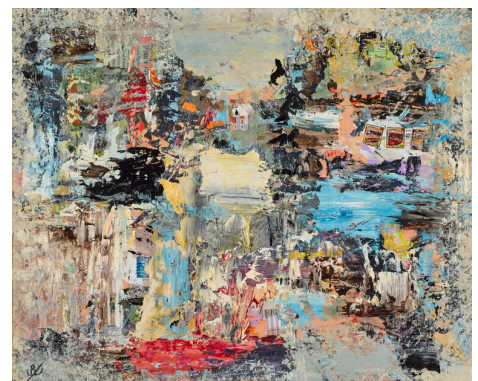
JOHN KINGERLEE
End of Term, 2016

50.8 x 40.6 cm (h x w)
Collage on Indian Paper



JOHN KINGERLEE
Bright Journey (Srik series), 2017

40.6 x 50.8 cm (h x w)
Collage on Indian Paper



JOHN KINGERLEE

The Young Man's Story (Srik series), 2016

48.3 x 50.8 cm (h x w)

Collage on Indian Paper



JOHN KINGERLEE

Milestone (Srik series), 2018

30.5 x 61 cm (h x w)

Collage on Indian Paper



JOHN KINGERLEE

Many Days (Srik series), 2016

40.6 x 48.3 cm (h x w)

Collage on Indian Paper

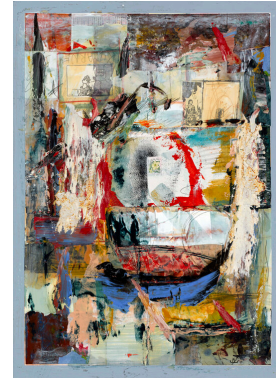


JOHN KINGERLEE

A Journey (Srik series), 2013

55.9 x 38.1 cm (h x w)

Collage on Indian Paper



JOHN KINGERLEE

Head III, 2015

101.6 x 101.6 cm (h x w)

Giclee print on Hahnemuhle etching paper. Edition of 10

